

UTOs - 'Unidentified Technical Objects'

Plattform V8 - Karlsruhe - August 2011



re•mote [ri'məʊt] control - 2000 remote controls



(§)"=\$" - 2003

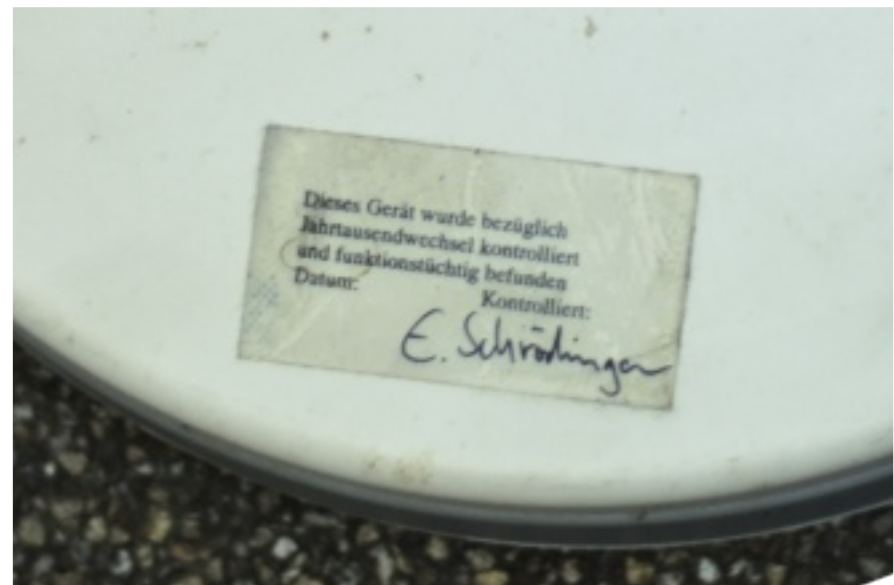
needleprinter, ccd-camera, CPU, various electronics



A camera on a printers head sends images as ascii-data to the printer. The printout in turn is fed back to the camera as optical data which again generates ascii-data sent to the printer

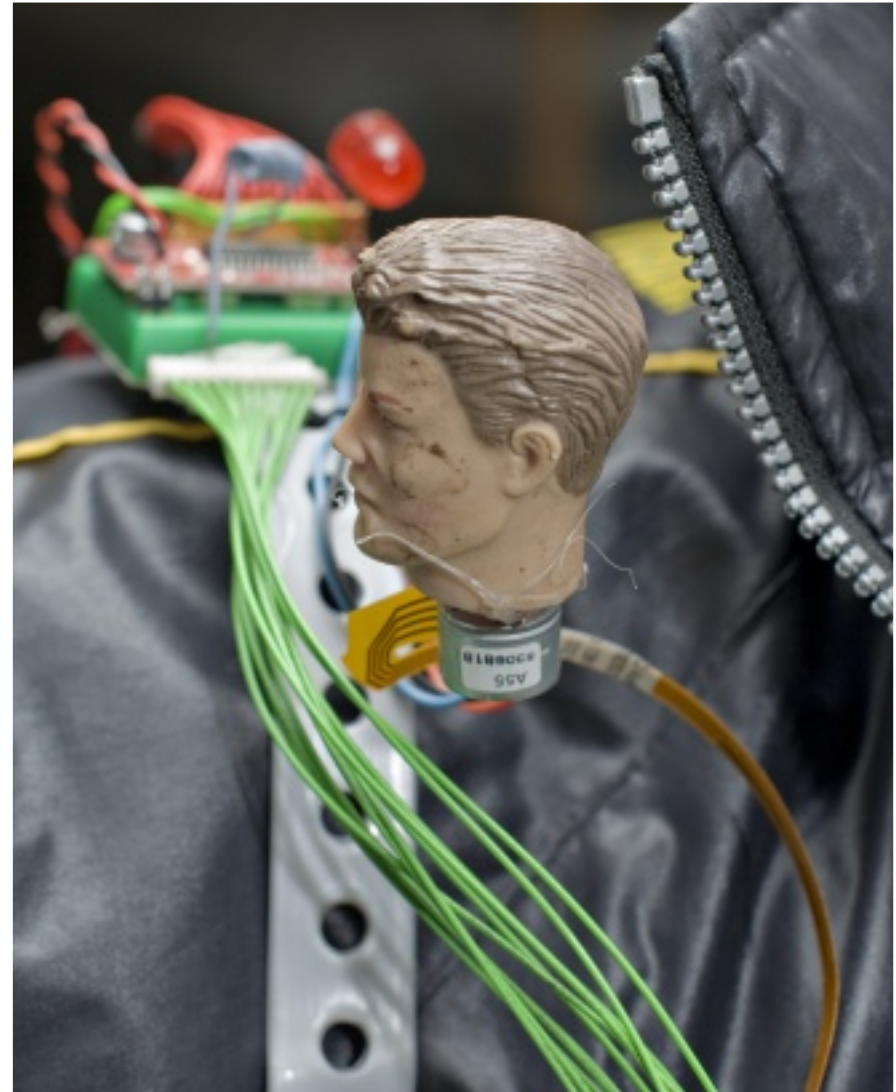
2Yk - 2006

automatic pet feed



Energiewächter Uolf von der Galaxy Vision - 2009

various electronics from trash



The energy watchdog Uolf from the Galaxy Vision is constantly monitoring the cosmic background radiation to stay in the perceivable area. Uolf constantly accompanied the artists guided public tours.

Speculatrix Procarya - 2009

webcam, actuators, CPU, various electronic trash



Speculatrix Procarya is an adaptive creature whose perception, and behaviour, traits of autonomy and artificial curiosity are examined. Human appearance is stimulating the locomotion of the tendril.

Uruca Caliandrum - 2010

hairbrush, servomotors, microcontroller



The hairbrush comes with an built-in OrientationAssistance™¹. This OrientationAssistance™ assists machines to perceive the sunrise. With the break of dawn the hairbrush wakes up and starts moving in the direction of the sunrise. As soon as it reaches a nice position to gaze at the sunrise the hairbrush congeals.

During the day it will regain the energy loss from the morning exercise with the help of the solarcells on it's back. In this time and also during the night it then can be used as an everyday hairbrush, before it then with the break of dawn will awake again.

¹ OrientationAssistance™ is a trademark of Nicolaus Copernicus & co.

Retortenheber, der - 2011

jelly, motion detector, excentric motor



A motion detector is mounted on the pudding. Detected motion triggers the excenter motor and the jelly starts to wobble.